



# **HY-02 Air Cushion Machine Operation Manual**



Please read the instruction manual carefully, before installing and using the product.  
(Please keeping properly in case of use need)

[info@aircell.it](mailto:info@aircell.it)

# I. About Operation Manual

This manual wrote for identify the machine parts location, interpret the system's operation and solve solution for basic malfunction.

This manual for HY-02 Air Cushion Machine.

Special Symbol's Definition and Suggestion:



“Lightning Flash” Symbol: Not insulated parts inside the machine, touch may cause electric shock.



“High Temperature” Symbol: Remind of high temperature risk, do not touch.



“Pinching Hand” Symbol: Remind of rolling risk, keep hands away.

## II. Instructions for Safe Use

**1. Please read carefully and understand completely all the information of this manual.**

**2. Please confirm the following matters before operate system:**

- The authorized dealer or technicians has provided complete training to the operator.
- The operator has read and understood all the safety signs posted on the device.
- Confirm the air filling machine power part--the power source meet the demand of machine, and use with grounding device.



**Warn:** Improper grounding may cause electric shock.



**Warn:** Do not open the machine cover. the cover disassemble should done by authorized technicians and technician trained maintenance personnel.



**Warn:** Be careful of rolled into the machine! when machine start to work like pull the film, inflate the film or sealing, please keep finger, hair, jewelry, and clothes away from the sealing roller.

**3. Please confirm the following matters before maintain and repair equipment:**

- Power off the machine and plug off the power source.
- Note: HY-02 air cushion machine only can used for our company's film. if use with the film not provided by our company, we have the right to terminate the maintenance services immediately and stop supply all the film and relative use material.



**Warn:** Except the description of this manual's "Maintenance & Repair", please do not attempt to repair or modify HY-02 filling machine. Repair should be carried out by representatives of our company, authorized distributor or professional maintenance personnel trained by our company.



**Warn:** Please do not open the belt cover except for execute the belt replacement of this manual.

#### 4. Inspect the equipment regularly to ensure the followings:

- The wires of all parts are not scratched, damaged and broken.
- No debris remains on the belt.
- All control parts and display unit are operating normally.

**! Warn:** Any inconsistent system description to the manual during use, please turn off the system immediately, unplug the power plug and contact our technical service representative.

#### 5. Noise

HY-02--The max. running noise of the machine is 95 decibels, please confirm if this value available for the standards of local regulations.

#### 6. Environmental Conditions

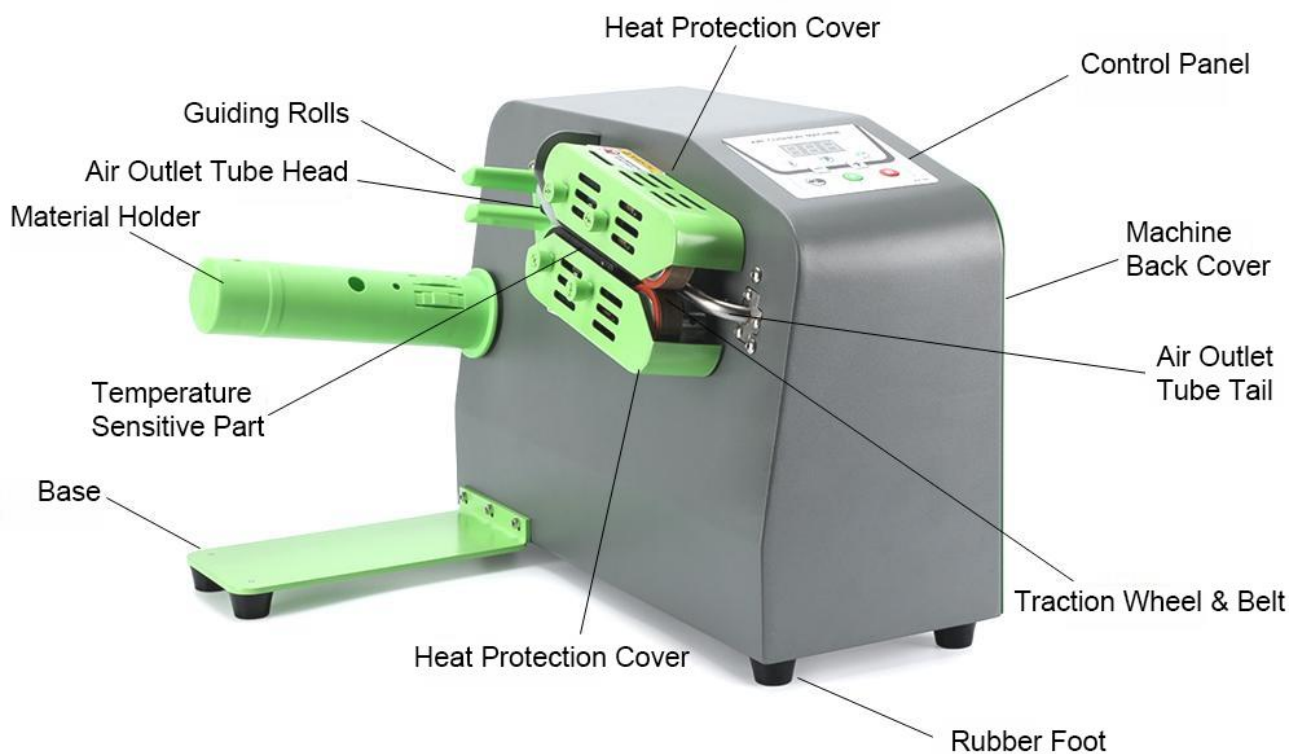
- Storage temperature: Machine: 0-43°C; Film: 0-43°C
- Operating temperature: Machine 16-43°C; Film: 16-43°C

**! Warn:** The film can only work well (good seal effect) when placed at the above temperature parameter range, if storage in the environment exceed/below above temperature range, might cause the film broken.

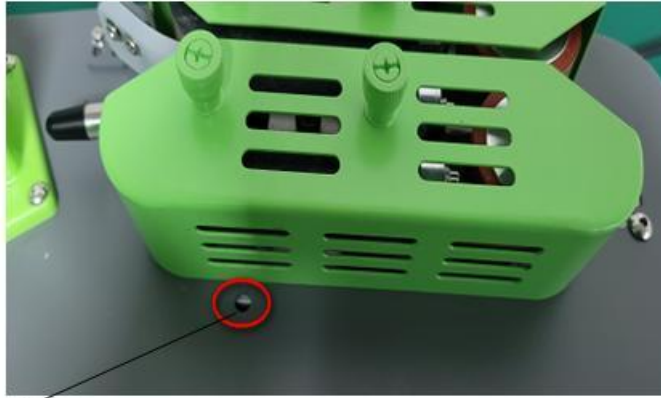
#### 7. Potential risks

Even though most of part of HY-02 equipped with belt cover, still some parts not been covered, please be careful during operation.

## III. Structure of HY-02



info@aircell.it

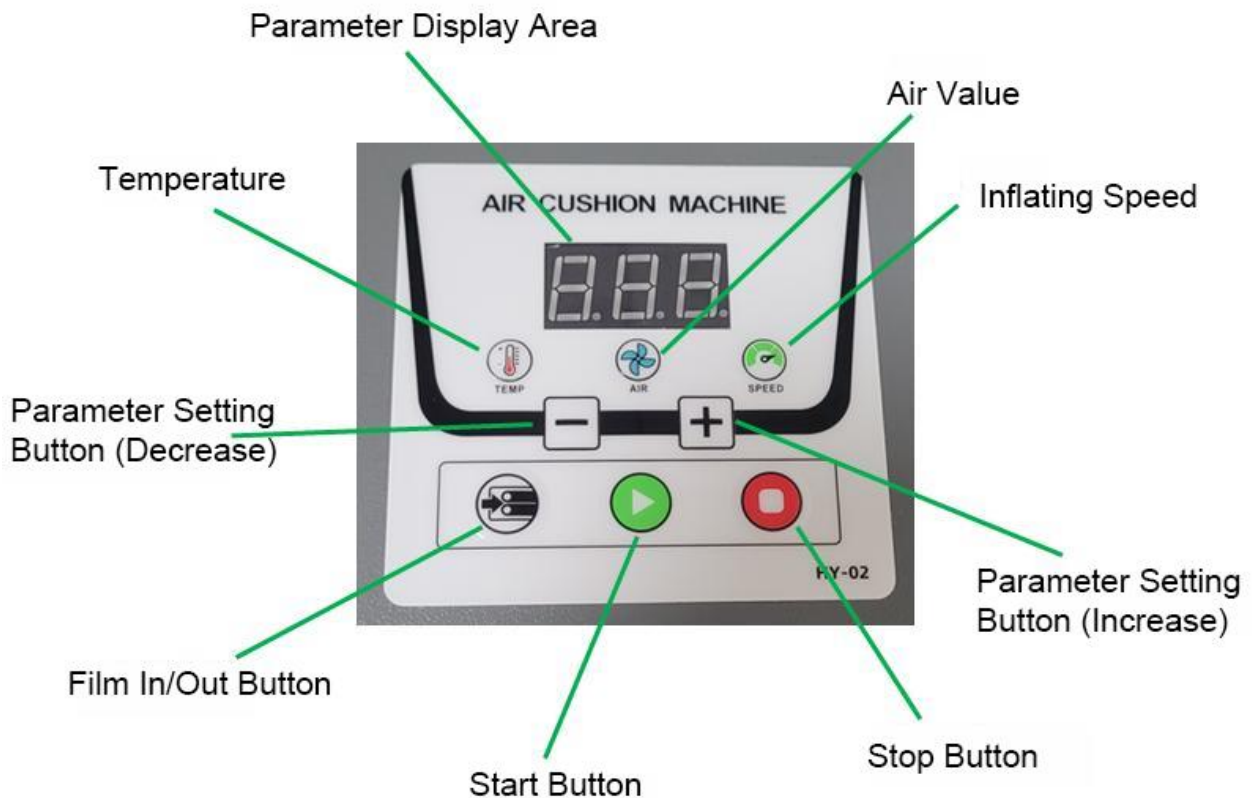


The upper and lower heat sensitive parts' separating and fixing hole location



Pic 1

## IV. Operation Panel



Pic 2

## V. Parameters

### Parameters

Dimension: 400MM\*370MM\*300MM (L\*W\*H)

Package Dimension: 460MM\*325MM\*360MM (L\*W\*H)

Net weight: 9KG

Weight: 10KG

### Technical Parameters

Model: HY-02

Rated power: 200W

Heat seal temperature: 001-175 (adjustable)

Speed: 001-100 (adjustable), max 16m/min

Anti-electric shock sort: I

Input voltage: AC110-220V

Rate frequency: 50HZ/60HZ

Power connection: Y

Air volume: 001-100 (adjustable)

## VI. Packing List

Item	Qty
Host	1
Material Holder	1
Power Cord	1
Hexagonal	4
Support Base	1
Spare Belt	2
High Temperature Resistant Tape	4
Blade	2

## VII. Installation and Operation

1. Install the material holder (refer to pic 1)
  - (1) Take out the hexagonal of the biggest size as below:



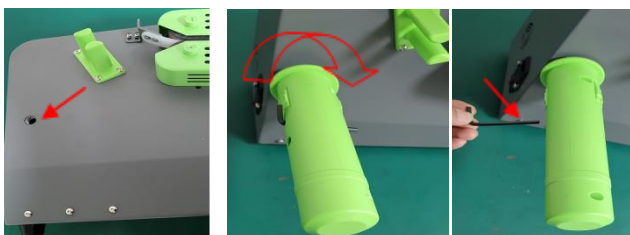
- (2) Rotate the screw rod to align the hole on the metal shaft in line with the hole on the plastic shell.



- (3) Put the biggest size hexagonal into the above hole.



- (4) Put the screw rod into the installation hole, rotate clockwise until tightened, then pull out the hexagonal and the installation of material holder is finished.

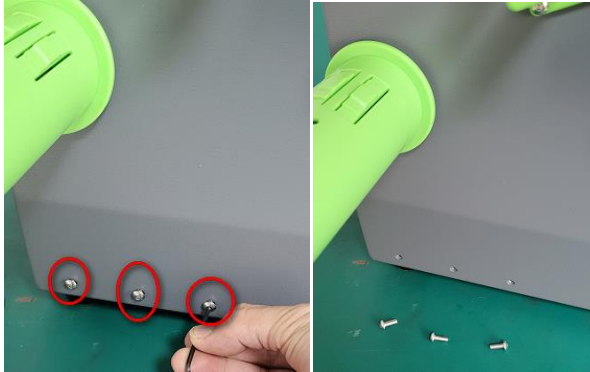


## 2. Install the support base

- (1) Take out 2.5mm hexagonal



- (2) Remove the three screws as below



- (3) Take out the support base, and screw it well.



## 3. Operation

- (1) Connect the power cord and power on the machine.





- (2) Put the film roll onto the material holder, make sure the channel of the film is close to the machine side.



- (3) Pull the film throughout the head of air tube.



- (4) Pull the film with left hand, meanwhile press the “FILM IN” button, stop to pull the film until the film is totally throughout the air tube.



- (5) Adjust the parameters according to different types of films (details please refer to VIII part), then press “START” button to inflate the films.





## VIII. Parameters Setting Recommended

### 1. For Air Cushion Film (40cm width)

Parameters Setting Recommended for Air Cushion Film (40cm width)			
Thickness	Temperature Setting	Speed Setting	Air Setting
15um	112	70	100
18um	115	70	100
20um	120	70	100
25um	125	70	100

### 2. For Air Pillow (20cm width)

Parameters Setting Recommended for Air Pillow (20cm width)			
Thickness	Temperature Setting	Speed Setting	Starting Air Value
15um	112	80	30
18um	115	80	30
20um	120	80	30
25um	125	80	30
Remark: For Air value setting, starting with 30, adjustable in filling process.			

Note: The above parameters setting data is a basic recommendation, different film types have different parameters setting. Due to different environmental temperatures, the speed, temperature, air value settings are different. Recommend to adjust the data and record them down in daily use.

## IX. Fault Symptom and Processing

Fault symptom	Processing
The film is stuck	1. When inflate air pillow, if the air value is set too big, there will be stuck, so reduce the air volume.
	2. Check the blade to see if there is rust or chip, or loose of the set screws of blades, if yes, please replace the new blade or tighten the set screws.
	3. Check if there is foreigners on the traction wheel or the belt, if there is, please clean the wheel and belt.
The sealing of the film is worn-out	Try to reduce the temperature value
The sealing of the film is poor or air is leaking out	Try to increase the temperature value
The film runs out of the air tube in operation	Try to reduce the air volume value or reduce the speed.
The belt is slipping	Check if there are foreigners on the belt, if yes, clean it
The power is on but the screen is not light	Check if the fuse is burnt, if yes, please replace it.

**Note: If the fault could not be solved, please contact the authorized dealer or technician for further treatment.**

## X. Cautions

1. Do not use in a humid environment.
2. Before operation, please take care of following instruction:
  - If the system is not grounding properly, may cause an electric shock.
  - Do not open the protective or examine/repair cover. Only our service personnel or authorized dealer maintenance service personnel can open.
  - During operation and loading material, please avoid direct touch to roller from finger, clothes, jewelry and hair. (tie hair up suggested).
3. Inflatable bag only is suggested used as packing materials, do not use it as float, pillow, or child toy.
4. The weight of filling material (film) is not over 7KG, during material loading, do NOT stress it or leaning.
5. When the material is driven by the machine, static electricity will be generated. The material itself will also have static electricity. The operator cannot wear slippers or not wear shoes. Otherwise, the human body will become a conductor of static electricity, and feel like electric shock.
6. After long time operating the machine, if the film does not run smoothly or gets stuck, please replace the blade in time.
7. After long time operating the machine, if appearance the sealing edge is not firm, broken seal edge, please confirm if the temperature proper, if the temperature belt broken, if yes, please replace it in time.
8. Speed and air volume of the air filling machine should adjust mutually, different films have different parameters, no rated standard, need adjust the parameters according to the actual condition.

**Attention: Do not run the machine without material ! ! !**

9. **Warn:** Improper grounding may cause electric shock.
10. **Warn:** Using with Wring board will be increasing the static electricity, which may cause operational problem and make the operator feel uncomfortable.

The inner of the machine has grounding wire, please use single-phase three-wire system power cord, the use of the grid must have a reliable grounding, otherwise static electricity cannot be discharged, the human body will become a conductor of static electricity, and feel like electric shock.

## XI. Storage of the Materials

1. Please use the film produced by our company, if not, may cause broken bag problems or influence the effect of the packing bag, and even damage the machine.
2. The temperature range of storage should be 0-43°C. The film is available when stored in this range (0-43°C). If exceed or below this range, the films may be damaged.
3. The operating temperature range of the films is 16-43°C .  
Please used the film within this temperature range to achieve the best sealing effect.

## XII. Maintenance & Repair

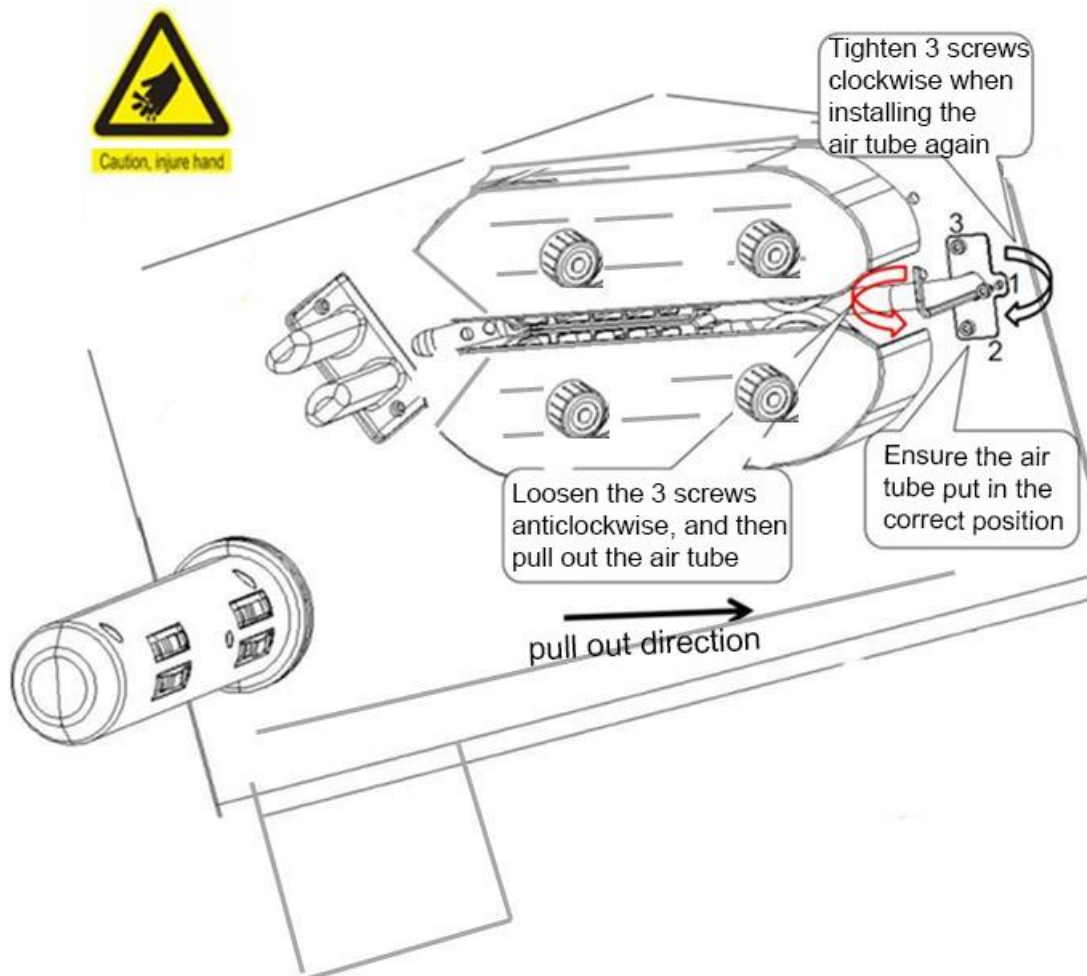
## 1. Preventive maintenance

**Before maintain or repair the machine, please do remember turn off the machine and plug the main power cord off from the socket.**

Maintenance cycle	Detail	Description
Weekly	Check & clean	1. Open the belt cover of machine, blow off the dust; 2. Check if there is any abnormal abrasion machine component. 3. Clean the dirty on the traction rubber wheels and the belts.
Every year	Contact	If possible, arrange an on-site inspection; Contact the authorized distributor or our technical service representative to check the machine.

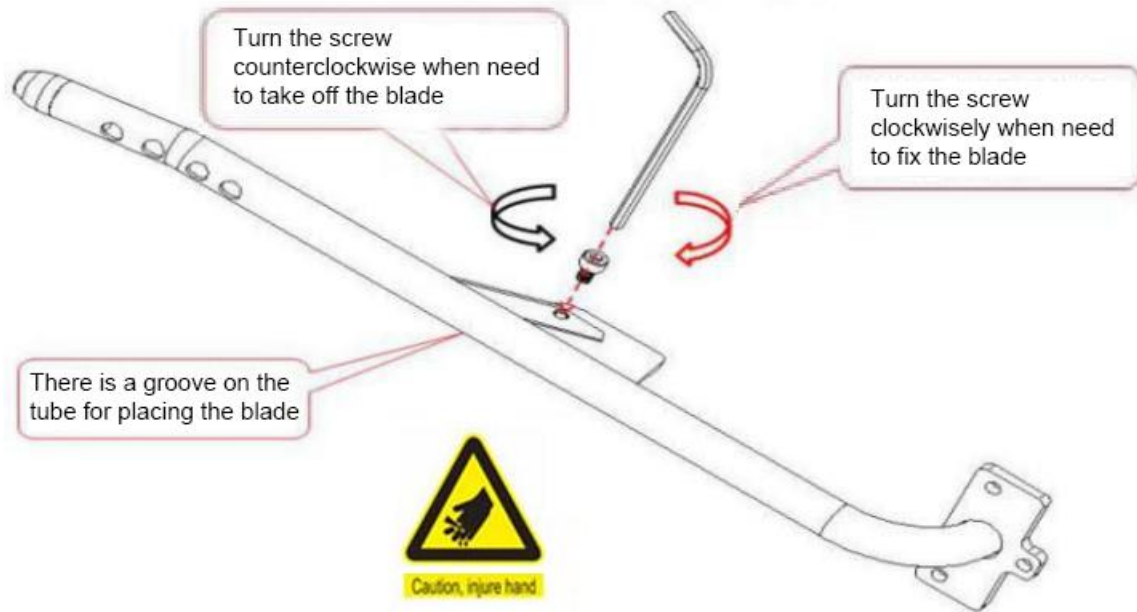
## 2. Replace the blade

- (1) Take down the 3 screws with hexagonal, and pull out the air tube, then loosen the screws which fasten the blade, replace with the new blade, and finally put the air tube in original place.



Pic 3 (Tube replace and install instruction diagram 1)

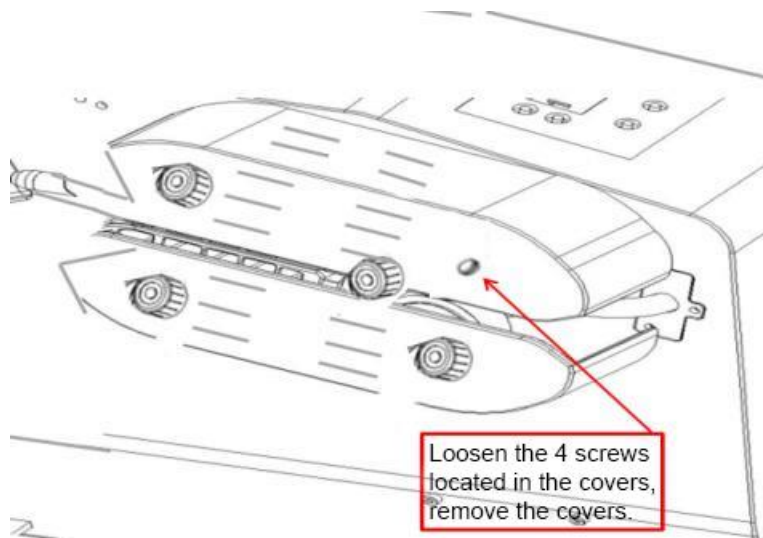
- (2) When remove the blade, please loosen the screws anticlockwise.  
When install the blade, please tighten the screws clockwise, put the blade into the groove, and make sure the blade nose is in the groove.



Pic 4 (blade replace and install instruction diagram 2)

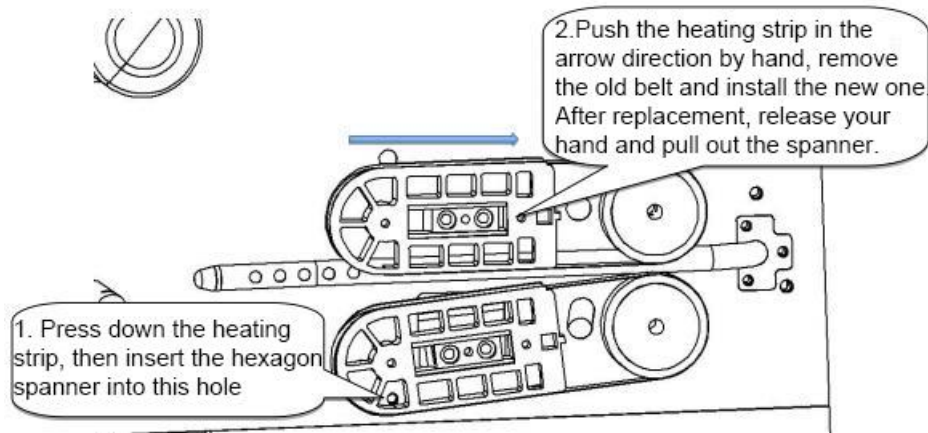
### 3. Replace the high temperature belt

- (1) Loosen the cover screw and remove the upper and lower protective covers. push the heating strip to the direction of traction wheel, replace the belt, then close the cam handles, install the cover back.



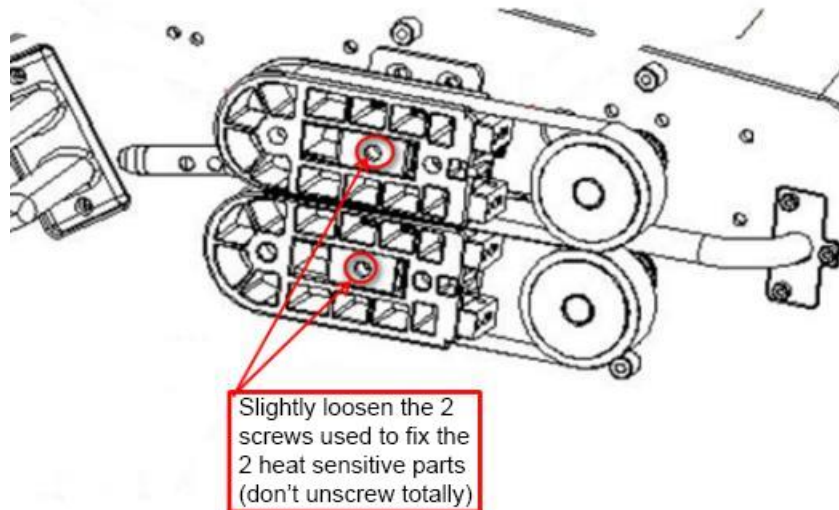
Pic 5 (high temperature belt replace and install instruction diagram 1)

(2) Firstly press the lower heating strip downward, insert the hexagonal after the inner and outer holes are concentric. Then push the heating strip in the direction of the arrow (if it cannot be pushed, loosen the two heating strip fixing screws) to loosen the belt. Remove the belt and replace with the new one. Finally install the screws back as original, remove the hexagonal, and install the upper and lower protective covers.



Pic 6 (high temperature belt replace and install instruction diagram 2)

Loosen the two fixing screws of the heating strip, no need to unscrew them out, just loosen them.



Pic 7 (high temperature belt replace and install instruction diagram 3)

## 4. Replace the high temperature adhesive tape

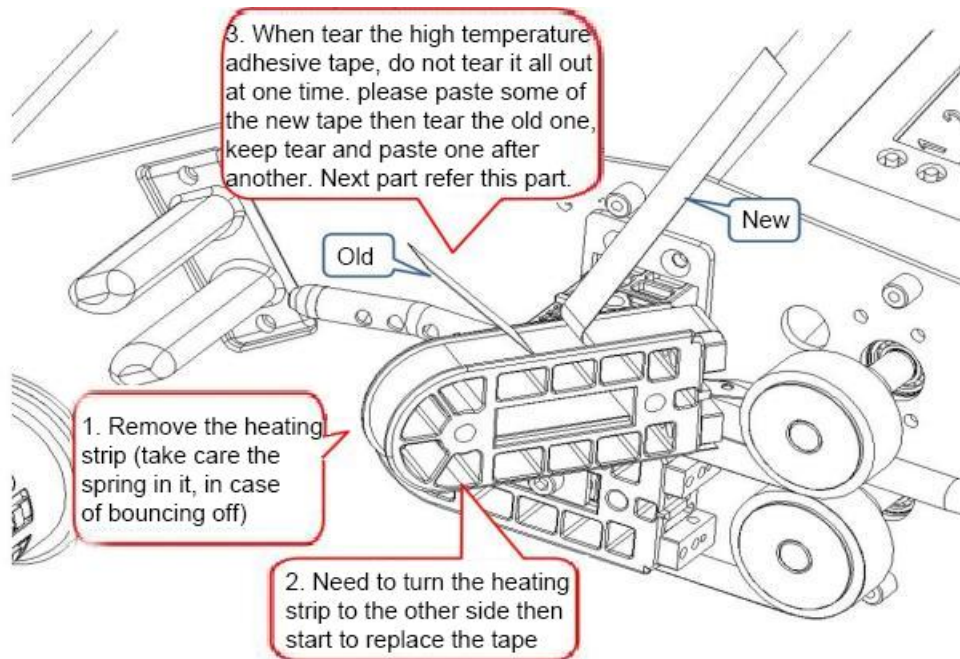
Loosen the anti-loosening screw and remove the belt cover.

Fix the position of the lower heating strip with hexagonal, so that the upper and lower heating blocks are separated.

Use a hexagonal to loosen the screws and pressing pieces in the middle of the heating strip, and remove the heating strip (note that the spring may bounce off).

Tear off the old high-temperature adhesive tape and replace it with a new one.

Finally install the heating strip, belt, and protective cover back to their original positions.



Pic 8 (tape replace and install instruction diagram 1)